

LASER SYSTEMS PROMOTION & DESIGN



- LASER SYSTEMS
- AUTOMATIONS
- ACCESSORIES
- SERVICE
-
-



ORIGINAL

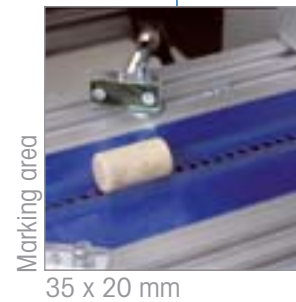
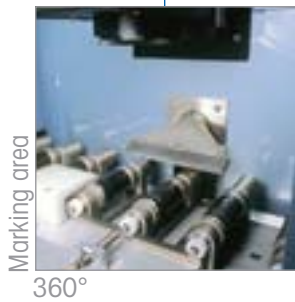
TAMPOPRINT

Tampon printing machines
 ALFALAS® Laser Systems
 Automations
 DMD® Industrial Inkjet Systems

MOF-CIRCUM LONGCAPS



MOF-CORK SYNTHETIC CORKS



OPTIONS & FUNCTIONS

Our fully automatic machinery for marking / decoration of rotation symmetric parts (e.g. longcaps).

- ✓ transport via segment belt with mandrel
- ✓ 'On-The-Fly' marking
- ✓ marking without any distortion with 360° continuous
- ✓ high marking speed up to 20.000 parts/h
(depending of the material and the marking circumference/
vectors)

Our fully automatic machinery for the marking / decoration of synthetic wine corks.

- ✓ transport via conveyor belt
- ✓ 'On-The-Fly' marking
- ✓ marking without any distortion with a logo and / or text
- ✓ high marking speed up to 10.000 parts/h
[see our examples (extreme close-ups)]

MOF-PROMO PLASTIC CLOSURES



MOF-PROMO CROWN CORKS



Marking area

ø 45 mm (inner surface)



Marking area

ø 24 mm (inner surface)

SOFTWARE & FUNCTION

Our fully automatic machinery for the laser marking of beverage closures distinguishes itself in being compact and by the possible integration into existing production lines.

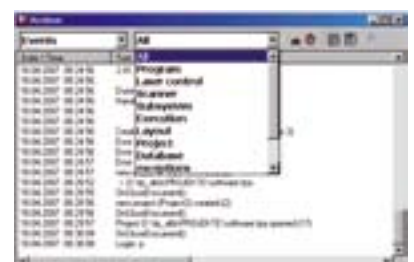
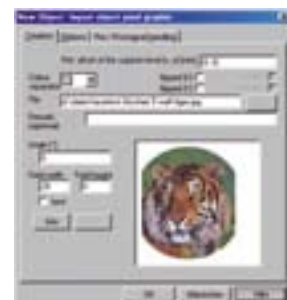
- ✓ transport via a vacuum band
- ✓ 'On-The-Fly' marking
- ✓ no set-up times necessary
- ✓ high marking speed up to 90.000 parts/h
up to 60.000 parts/h with 30 signs,
2 mm type height, single line font, 4 lines

- ✓ Especially developed software TP_mix that allows all usual kinds of marking of closures
- ✓ From simple logos up to the marking of codes (Unique Message).
- ✓ TP_mix software, developed by TAMPOPRINT AG. Allowing all processes incl. the necessary safety (passwords, logging etc.).

SOFTWARE

TP_alfa® & TP_mix

<p>Laser software – graphic user interface</p>	<ul style="list-style-type: none"> ➤ toolbars ➤ context menu ➤ bar code module ➤ TrueType fonts ➤ single line fonts ➤ freely defined filling routines ➤ variable formats ➤ Unicode compatible ➤ optional control via TCP/IP or RS232
<p>Laser parameters</p>	<p>All parameters necessary for the control of the laser can be freely adjusted and saved. The adjustments can be assigned to the individual objects, if necessary.</p> <ul style="list-style-type: none"> ➤ first pulse killer ➤ output power ➤ modulation of the laser beam ➤ speed ➤ delay times
<p>Import functions</p>	<ul style="list-style-type: none"> ➤ Import filter for vector based file formats (*.ai, *.plf) ➤ Import filter for pixel based file formats (*.jpg, *.bmp, *.tif)
<p>Additional software TP_mix</p>	<p>Special software for promotions.</p> <ul style="list-style-type: none"> ➤ all current promotion types (symbols, PIN code variants) can be generated ➤ special safety function for tamperproof production
<p>Database</p>	<p>Integrated database for logging of all relevant occurrences such as</p> <ul style="list-style-type: none"> ➤ produced number of pieces ➤ user login ➤ error ➤ downtimes



TECHNOLOGY

Standard & Options

		MOF-Circum	MOF-Cork	MOF-Promo Closures	MOF-Promo Crown corks
Article Number		41 99 99	41 09 10	41 09 00	41 09 00
Laser type		SK 96	2x SK 96	SK 96	SK 96
Output power	W	90	90	90	90
Wavelegth	nm	1064	1064	1064	1064
Laser medium		Nd:YAG	Nd:YAG	Nd:YAG	Nd:YAG
Pump source		lamp	lamp	lamp	lamp
Lifetime pump source	h	ca. 1000	ca. 1000	ca. 1000	ca. 1000
Cooling		water/water	water/water	water/water	water/water
Water temperature	max.°C	20	20	20	20
Pressure	bar	2-5	2-5	2-5	2-5
Water consumption at 20°C	max.	9,5 l/min.	2x 9,5 l/min.	9,5 l/min.	9,5 l/min.
Runback water		w/o pressure	2x w/o pressure	w/o pressure	w/o pressure
Feeding		yes	yes	option	option
Marking area		360°	35x20 mm	Ø 26-50 mm	Ø 26-50 mm
Output capacity	parts/ h	up to 20.000	up to 10.000	up to 90.000	up to 90.000
Laser class acc. DIN EN 60825-1		1	1	1	1
Connected voltage		3/N/PE, 400 V	3/N/PE, 400 V	3/N/PE, 400 V	3/N/PE, 400 V
Connected load	kW	10	14	7	7
Pneumatic system		yes	-	yes	yes
External connection for suction unit		yes	yes	yes	yes
Width (incl. feeding)	mm	6.200	1.950	2.010	2.020
Depth (incl. feeding)	mm	1.800	1.000	835	1.600
Height (incl. feeding)	mm	2.450	1.800	1.580	2.765
Weight	kg	1.800	850	750	1.200
External cooling unit		option	option	option	option
Article Number		41 01 05			
Cooling capacity	kW	7	2x 7	7	7
Water temperature	max.°C	20	20	20	20
Connected voltage		1/N/PE, 230 V			
Frequency	Hz	50			
Connected load	kW	2			
Cooling capacity	kW	5,5			
Noise level	dBA	< 60			
Width	mm	935			
Depth	mm	585			
Height	mm	540			
Tank capacity	liter	25			
Weight with filled tank	kg	133			



External cooler

TAMPOPRINT® AG brands:
TP_mix (TP_alfa®)
ALFALAS®



Dealer:



TAMPOPRINT® AG

Lingwiesenstraße 1
70825 Korntal-Münchingen, GERMANY
☎ +49 7150 928-0
Fax: +49 7150 928-400
E-Mail: info@tampoprint.de

"Ventes et Affaires Françaises"

☎ +49 7150 928-144
Fax: +49 7150 928-432
E-Mail: ventes@tampoprint.de
http: www.tampoprint.de

TAMPOPRINT® INTERNATIONAL CORP.

1400 26th Street, Vero Beach, FL 32960, USA
☎ +1 772 778-8896, 800 810-8896
Fax: +1 772 778-8289
E-Mail: sales@tampoprint.com
http: www.tampoprint.com

TAMPOPRINT® IBERIA S.A.U.

c/Caspe 127-135 local B, 08013 Barcelona, SPAIN
☎ +34 93 2327161
Fax: +34 93 2471500
E-Mail: tampoprint@tampoprint.es
http: www.tampoprint.es



The reproduction of trademarks and brands used in this brochure, even if not explicitly expressed, does not justify the assumption that such names or symbols may be considered as free as defined by the Trademark Act and may therefore freely be used. The rights are the property of the respective owner.
TAMPOPRINT® products are permanently updated to keep pace with the latest technological developments. For this reason, figures and descriptions are non-binding. Manufactured according to EC Directive 98/37/EC.

Subject to alterations! ©Copyright